





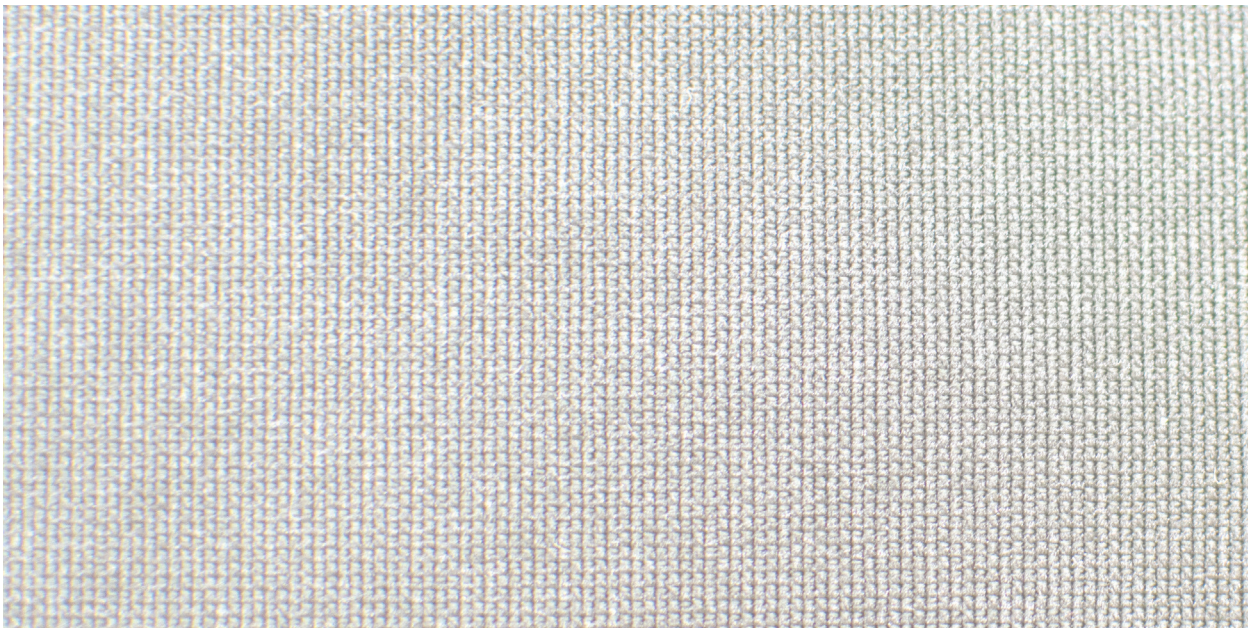


FULL-SPAN (118")		1420
MULTI-PURPOSE FABRIC	IDEAL FOR: Educational and Corporate Environments, Hotels, Lobbies, Hallways, and more.	     
118" usable width		



Black | 001

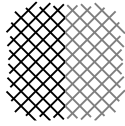


White | 002

FULL-SPAN (118")

1420

MULTI-PURPOSE FABRIC



Every effort has been made to ensure the color accuracy. However, color may vary. We recommend ordering a fabric sample.

IDEAL FOR: Educational and Corporate Environments, Hotels, Lobbies, Hallways, and more.

118" usable width

ALSO GREAT FOR: Acoustics and Wall/Ceiling Protection in Large Spans. Typically used for Ceilings.



DESCRIPTION

Our Full-Span (118") Fabric is the go-to option for ceilings or large expanses of wall that need coverage with minimal seams or intersections. This classic fabric looks great and doesn't sacrifice functionality to do so. Full-Span Fabric allows air and sound waves to pass through it so they can be absorbed by the substrate/backing which can help considerably with sound and reverberation issues in noisy areas.

SPECIFICATIONS

Content: 100% Polyester

Weight: 19.2±1.0oz / linear yard

Width: 118" usable

Repeat: N/A

Directional: No

Colorfastness to Crocking: Grade 4 min. dry & Grade 4 min. wet
(AATCC 8 - 2016)

Colorfastness to Light: Grade 4 min. at 40 hours
(AATCC 16 Option 3 - 2014)

PERFORMANCE WALL COVERING



- Chosen for acoustically sensitive applications
- Allows air to pass through
- Can be used for speaker covers



- Self-healing (Leaves no visible holes)
- Durable fibers
- Plain-Weave construction



- Certified to meet national and local fire codes (NFPA 701)




- Best suited for high traffic interior spaces
- Ideal for hallways, corridors, and bulletin boards



- Highly resistant to wear
- ASTM D4157-13 (100,000 Double Rubs)



- Standard Care Label W-S
- For water based stains use water base cleaning agents only, do not use solvents
- For oil based stains use solvent cleaners only

*Any colors with a  **QuickShip** icon will ship within 1 (one) business day. Additional colors available upon request.